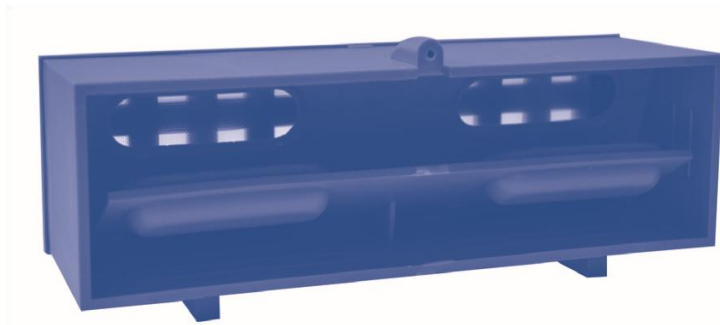


# Anti Flood Airbrick



As part of your complete flood protection scheme, a property must have all points of water ingress protected. For further information contact us.

## BEFORE INSTALLATION CHECK THE AIRBRICK

- Detach the screw front face with a suitable screwdriver.
- Remove the transit tab.
- Check inside the Flood Angel® Anti-flood Airbrick to ensure that the moveable flood gate has not detached in transit. If it has, clip firmly back into its holding lugs. The grey silicone pads must face upwards so that the gate rests at a 45° angle.
- Clean aperture with brush.

Tools & materials required: screwdriver, slotted screwdriver, power drill with 6mm masonry bit, grinder or lump hammer and chisel, sand, cement and PVA.

## REMOVE EXISTING AIRBRICK (If Applicable)

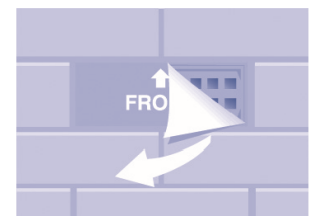
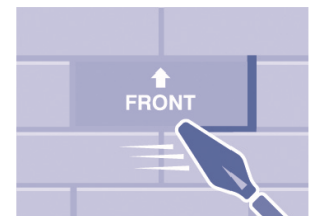
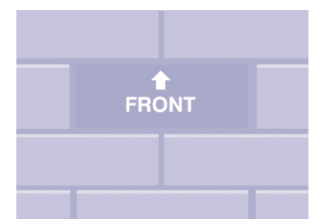
- 1 Locate airbrick to be replaced.
- 2 Starting at a corner drill through the mortar with the power drill. Drill holes along the mortar surrounding the airbrick.
- 3 Grind out the mortar around the airbrick or break out with hammer and chisel.
- 4 Once the airbrick is loose remove from wall and ensure that no mortar obstructs the corners.
- 5 Clean aperture with brush.



## Installing New Airbrick

### THIS BRICK MUST BE INSTALLED STRICTLY FOLLOWING THESE INSTRUCTIONS

- 1 Mix a mortar of sand, cement and PVA.
- 2 Wet the aperture with water.
- 3 Insert the Flood Angel® Anti-flood Airbrick ensuring the screw front is facing the exterior of the wall, the front of the Flood Angel® Anti-flood Airbrick is clearly marked front.
- 4 Point around ensuring that the full bed of mortar is achieved across the depth of the brick paying attention to the type of mortar and the style of pointing.
- 5 Remove film sticker to complete the installation and retain the serial no. to validate your warranty.



- The front of the Flood Angel® Anti-flood Airbrick is clearly marked FRONT with an upward facing arrow.
- The Flood Angel® Anti-flood Airbrick spacers guide the bottom into position with the screw fixing facing forward at the top.

For more information, please contact us on 01260 289 089 or email [info@floodplan.co.uk](mailto:info@floodplan.co.uk)